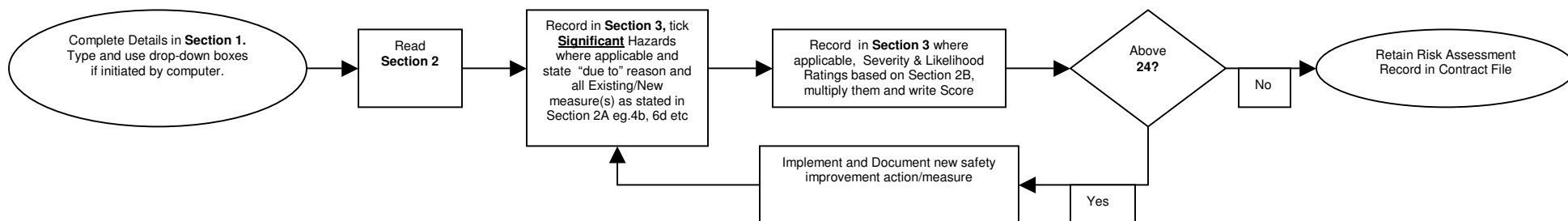


RISK ASSESSMENT RECORD



Section 1 – Assessor and Task Details

| | | |
|---|-----------------------------|-------------------------------|
| Assessors Name : | (Please Type/Print) | Department : |
| Assessors Signature: | | Assessment Date: |
| Site/Location : | Contract/Job No. | Task/Activity : Floor Mopping |
| Describe the Task/Activity in more detail (optional): | | |
| People at Risk: All persons within working Area | Special Groups at Risk: N/A | |

Section 2 – Classification of Risk and Hierarchy of Control

| Hierarchy of Control Category | A Common Measures | | | B SEVERITY | | LIKELIHOOD | |
|--|--|--|--------------------------|---------------|-----------------------|------------|--|
| | Description | Rating | Description | Rating | Description | Rating | |
| 1. Elimination | a) Cancel process, | b) Substance Obsolescence | Death | 10 | Absolutely Certain | 10 | |
| 2. Substitution | a) Substance Replacement, b) Personnel Replacement, c) Machine Replacement | | Total Incapacity | 9 | Almost Certain | 9 | |
| 3. Isolation | a) Physical barrier, | b) Handrails c) Electrical/Mechanical | Severe Incapacity | 8 | Highly Probable | 8 | |
| 4. Engineering Controls | a) Ventilation, | b) Limit Exposure c) Auto-machine cut-out | Slight Incapacity | 7 | Probable | 7 | |
| 5. Administrative Controls | a) Training (safety Induction, on-the-job, safety talk, job specific) b) Warning Signs, c) Procedures/Work Instructions | | Absent more than 4 Weeks | 6 | More than even chance | 6 | |
| 6. PPE (Personal Protective Equipment) | a) Safety Shoes e) Hearing Protection h) Respirator | b) Hard Hats f) Face Shield, i) Wet Suit | Absent more than 2 Weeks | 5 | Even Chance | 5 | |
| | <i>Other: if found when completing Section 3 (please state, this will help update the list):</i> | | Absent more than 3 days | 4 | Less than even chance | 4 | |
| | | | Absent 1 day or less | 3 | Improbable | 3 | |
| | | | Minor Injury | 2 | Highly improbable | 2 | |
| | | | Insignificant Injury | 1 | Almost Impossible | 1 | |

Section 3 – The Assessment: how people can get hurt and how we control it.

Instruction: Any Score (Severity x Likelihood) above 24 warrants a Corrective Action/further Safety Measure(s) and an Implementation date.

| 1. Physical/Mechanical Hazards | | | | | | | | | Implementation Date |
|--------------------------------|-----------------------------|---|--------------------------|---|----------|------------|-------|--------------------------------|---------------------|
| Ref. | Type | √ | Due To | Existing Measures (refer to Section2) eg. 4b, or please state | Severity | Likelihood | Score | Corrective/Improvement Action? | |
| 1.1 | Entanglement | √ | Electrical cables | 5b,5c,5a | 2 | 3 | 5 | | |
| 1.2 | Impact | | | | | | | | |
| 1.3 | Slipping | √ | Wet Floors | 5b,5c,5a | 3 | 4 | 12 | | |
| 1.4 | Tripping | √ | Debris Electrical Cables | 5c,5a | 2 | 4 | 8 | | |
| 1.5 | Falling | | | | | | | | |
| 1.6 | Crushing | | | | | | | | |
| 1.7 | Faulty Machine (Electrical) | | | | | | | | |
| 1.8 | Faulty Machine (Mechanical) | | | | | | | | |

| 2. Chemical Hazards | | | | | | | | | Implementation Date |
|---------------------|-----------|---|--------|---|----------|------------|-------|--------------------------------|---------------------|
| Ref. | Type | √ | Due To | Existing Measures (refer to Section2) eg. 4b, or please state | Severity | Likelihood | Score | Corrective/Improvement Action? | |
| 2.1 | Spillage | | | | | | | | |
| 2.2 | Fire | | | | | | | | |
| 2.3 | Explosion | | | | | | | | |
| 2.4 | Vapor | | | | | | | | |
| 2.5 | Radiation | | | | | | | | |
| 2.6 | Waste | | | | | | | | |

| 3. Biological Hazards | | | | | | | | | Implementation Date |
|-----------------------|------------|---|------------------|---|----------|------------|-------|--------------------------------|---------------------|
| Ref. | Type | √ | Due To | Existing Measures (refer to Section2) eg. 4b, or please state | Severity | Likelihood | Score | Corrective/Improvement Action? | |
| 3.1 | Dust | √ | Builders Dust | 4a,4b,5a,5c,6h | 2 | 5 | 10 | | |
| 3.2 | Fumes | √ | Poor ventilation | 4a,4b | 1 | 2 | 2 | | |
| 3.3 | Injection | | | | | | | | |
| 3.4 | Absorption | √ | swallowing | 5a,5c | 1 | 2 | 2 | | |
| 3.5 | Waste | | | | | | | | |

| 4. Ergonomic Hazards | | | | | | | | | Implementation Date |
|----------------------|------------|---|--------------------------|---|----------|------------|-------|--------------------------------|---------------------|
| Ref. | Type | √ | Due To | Existing Measures (refer to Section2) eg. 4b, or please state | Severity | Likelihood | Score | Corrective/Improvement Action? | |
| 4.1 | Stretching | √ | Un trained work practice | 5a,5c | 1 | 4 | 4 | | |
| 4.2 | Bending | √ | Un trained work practice | 5a,5c | 2 | 4 | 8 | | |
| 4.3 | Twisting | √ | Un trained work practice | 5a,5c | 1 | 3 | 3 | | |
| 4.4 | Visual | √ | Un protected eyes | 5a,5c,6c | 7 | 2 | 14 | | |
| Others | | | | | | | | | |