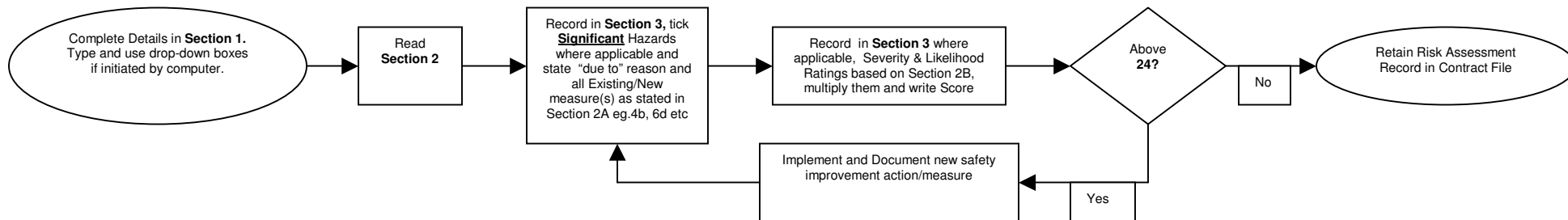


RISK ASSESSMENT RECORD



Section 1 – Assessor and Task Details

Assessors Name : Karyn *****	Department : Industrial Cleaning Division
Assessors Signature:	Assessment Date: 6 July 2009
Site/Location : Geka Manufacturing Ltd	Contract/Job No. *****
Task/Activity : High level cleaning of Plant Room	
Describe the Task/Activity in more detail (optional): High level cleaning of Plant Rooms using a Cherry Picker/Slim Tower	
People at Risk: All persons within working Area	Special Groups at Risk: N/A

Section 2 – Classification of Risk and Hierarchy of Control

Hierarchy of Control Category	A Common Measures	B			
		SEVERITY		LIKELIHOOD	
		Description	Rating	Description	Rating
1. Elimination	a) Cancel process, b) Substance Obsolescence				
2. Substitution	a) Substance Replacement, b) Personnel Replacement, c) Machine Replacement	Death	10	Absolutely Certain	10
3. Isolation	a) Physical barrier, b) Handrails c) Electrical/Mechanical	Total Incapacity	9	Almost Certain	9
4. Engineering Controls	a) Ventilation, b) Limit Exposure c) Auto-machine cut-out	Severe Incapacity	8	Highly Probable	8
5. Administrative Controls	a) Training (<i>safety Induction, on-the-job, safety talk, job specific</i>) b) Warning Signs, c) Procedures/Work Instructions	Slight Incapacity	7	Probable	7
6. PPE (Personal Protective Equipment)	a) Safety Shoes b) Hard Hats c) Eye Protection, d) Gloves e) Hearing Protection f) Face Shield, g) Harness 1m h) Respirator i) Wet Suit	Absent more than 4 Weeks	6	More than even chance	6
	<i>Other: if found when completing Section 3 (please state, this will help update the list):</i>	Absent more than 2 Weeks	5	Even Chance	5
		Absent more than 3 days	4	Less than even chance	4
		Absent 1 day or less	3	Improbable	3
		Minor Injury	2	Highly improbable	2
		Insignificant Injury	1	Almost Impossible	1

Section 3 – The Assessment: how people can get hurt and how we control it.

Instruction: Any Score (Severity x Likelihood) above 24 warrants a Corrective Action/further Safety Measure(s) and an Implementation date.

1. Physical/Mechanical Hazards									Implementation Date
Ref.	Type	√	Due To	Existing Measures (refer to Section2) eg. 4b, or please state	Severity	Likelihood	Score	Corrective/Improvement Action?	
1.1	Entanglement	√	Electrical cables	5b,5c,5a	2	3	5		
1.2	Impact	√	Cherry Picker	5a, 5b, 5c	8	2	16		
1.3	Slipping	√	Wet surfaces	5a, 5c, 5b, 6a, 6g,	2	3	6		
1.4	Tripping	√	Debris Electrical Cables	5c,5a	2	4	8		
1.5	Falling	√	Cherry Picker	5a, 5c, 6g,	2	3	6		
1.6	Crushing	√	Cherry Picker	5a, 5b, 5c	8	2	16		
1.7	Faulty Machine (Electrical)								
1.8	Faulty Machine (Mechanical)	√	Cherry Picker	5a, 5c	1	3	3		

2. Chemical Hazards									Implementation Date
Ref.	Type	√	Due To	Existing Measures (refer to Section2) eg. 4b, or please state	Severity	Likelihood	Score	Corrective/Improvement Action?	
2.1	Spillage	√	Cherry Picker/Fuel/Oil	5a	1	2	2		
2.2	Fire	√	Cherry Picker/Fuel/Oil	5a, 5c	5	2	10		
2.3	Explosion								
2.4	Vapor								
2.5	Radiation								
2.6	Waste								

3. Biological Hazards									Implementation Date
Ref.	Type	√	Due To	Existing Measures (refer to Section2) eg. 4b, or please state	Severity	Likelihood	Score	Corrective/Improvement Action?	
3.1	Dust	√	Dust	4a,4b,5a,5c,6h,	2	5	10		
3.2	Fumes	√	Poor Ventilation	4a,4b	1	2	2		
3.3	Injection								
3.4	Absorption	√	Swallowing	5a,5c	1	2	2		
3.5	Waste								

4. Ergonomic Hazards									Implementation Date
Ref.	Type	√	Due To	Existing Measures (refer to Section2) eg. 4b, or please state	Severity	Likelihood	Score	Corrective/Improvement Action?	
4.1	Stretching	√	Un trained work practice	5a,5c	1	4	4		
4.2	Bending	√	Un trained work practice	5a,5c	2	4	8		
4.3	Twisting	√	Un trained work practice	5a,5c	1	3	3		
4.4	Visual	√	Un protected eyes	5a,5c,6c	7	2	14		
Others									